



### Advantages

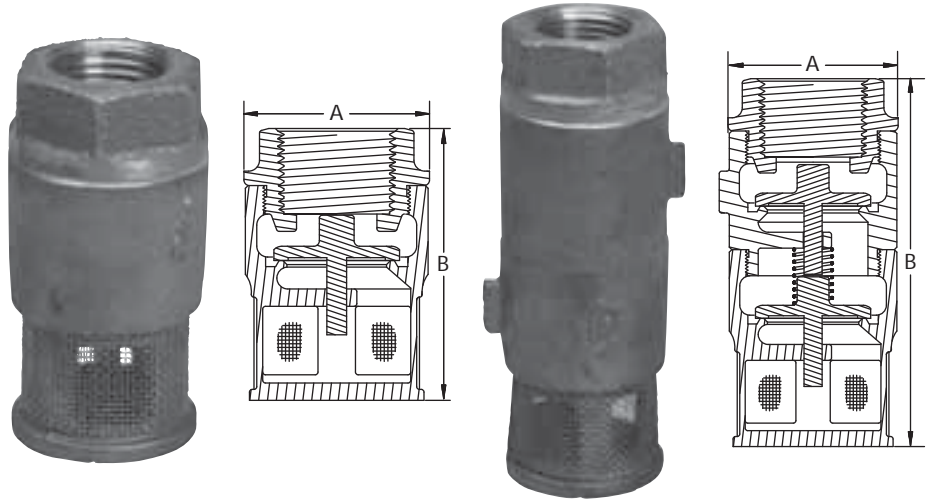
- Metal to metal poppet seating.
- 24 mesh screen protects the valve from debris.
- All valves are pressure tested to ensure accuracy.

### Materials

- Body: brass.
- Poppet: brass.
- Screen: 24 mesh brass.

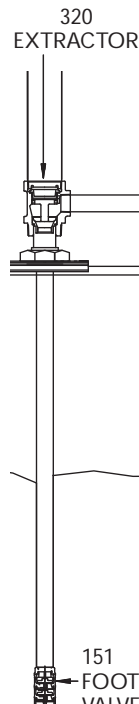
## 50-201 Brass Foot Valves

Foot valves are used to maintain the prime in suction system fuel lines. The foot valves are installed at the bottom of the suction pipe at the bottom of an underground storage tank. Single poppet foot valves are typically used where easy access to the valve is available. Double poppet models offer twice as much protection for maintaining the prime. Both 1-1/2" models can be used with EBW 320 extractor fittings.



50-105-01

51-100-01



Model	Description	A		B		Weight	
		In.	mm	In.	mm	Lbs.	Kg
50-105-01	1/2" single	1.44	37.00	2.75	70.00	0.75	0.34
51-100-01	1/2" double	1.44	37.00	4.00	102.00	1.18	0.54
75-105-01	3/4" single	1.69	43.00	2.75	70.00	0.94	0.43
76-100-01	3/4" double	1.69	43.00	4.00	102.00	1.31	0.60
100-105-01	1" single	2.00	51.00	3.00	76.00	1.12	0.51
101-100-01	1" double	2.00	51.00	4.25	108.00	1.56	0.71
150-202-01	1-1/2" single	2.75	70.00	4.25	108.00	3.12	1.42
151-200-01	1-1/2" double	2.75	70.00	5.38	137.00	4.38	1.99
200-200-01	2" single	3.44	87.00	4.88	124.00	4.38	1.99
201-200-01	2" double	3.44	87.00	6.75	172.00	6.44	2.92