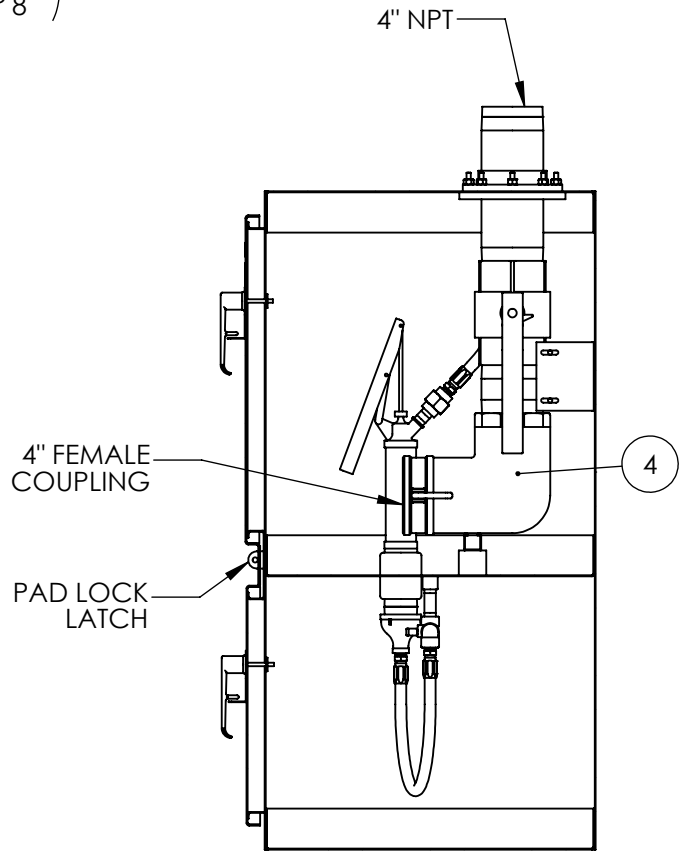
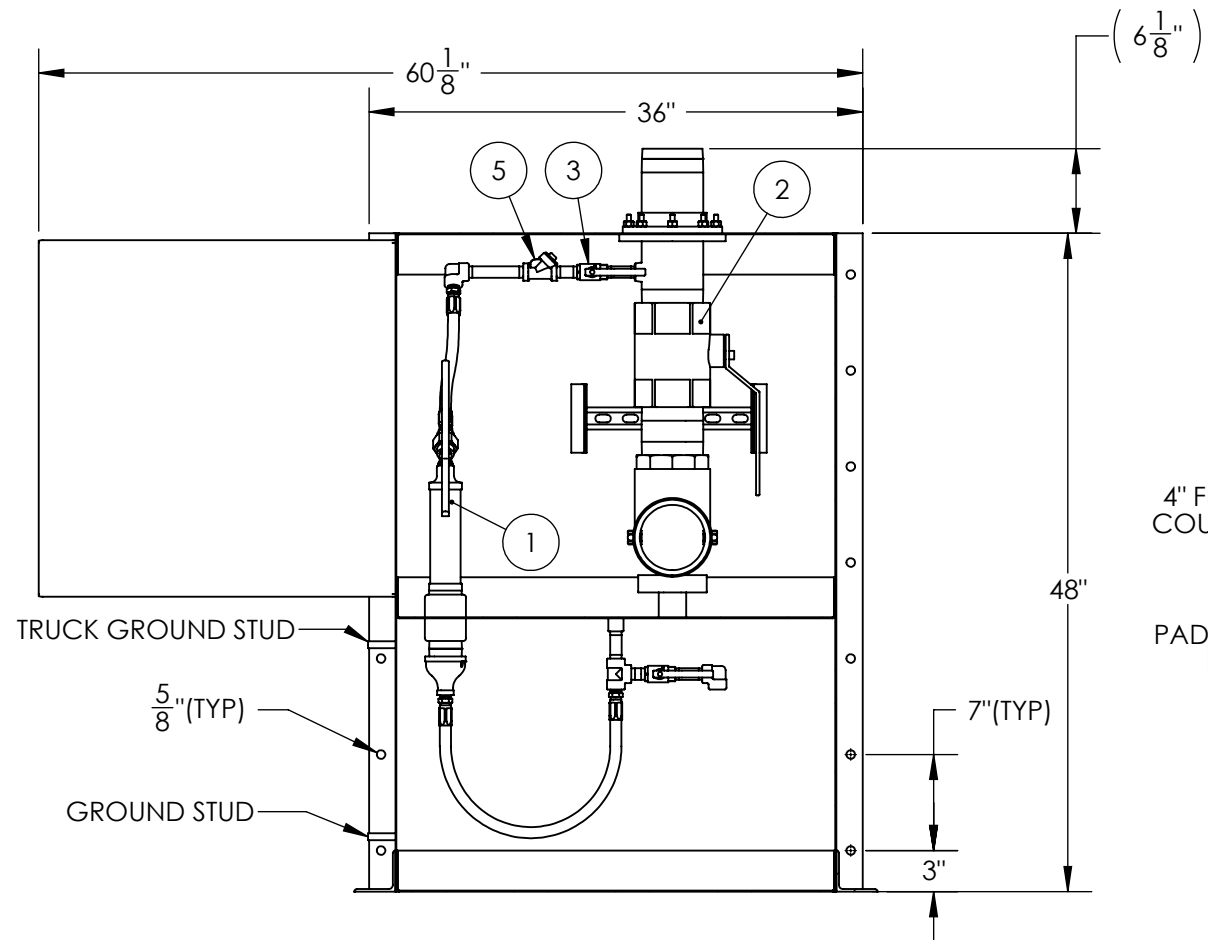
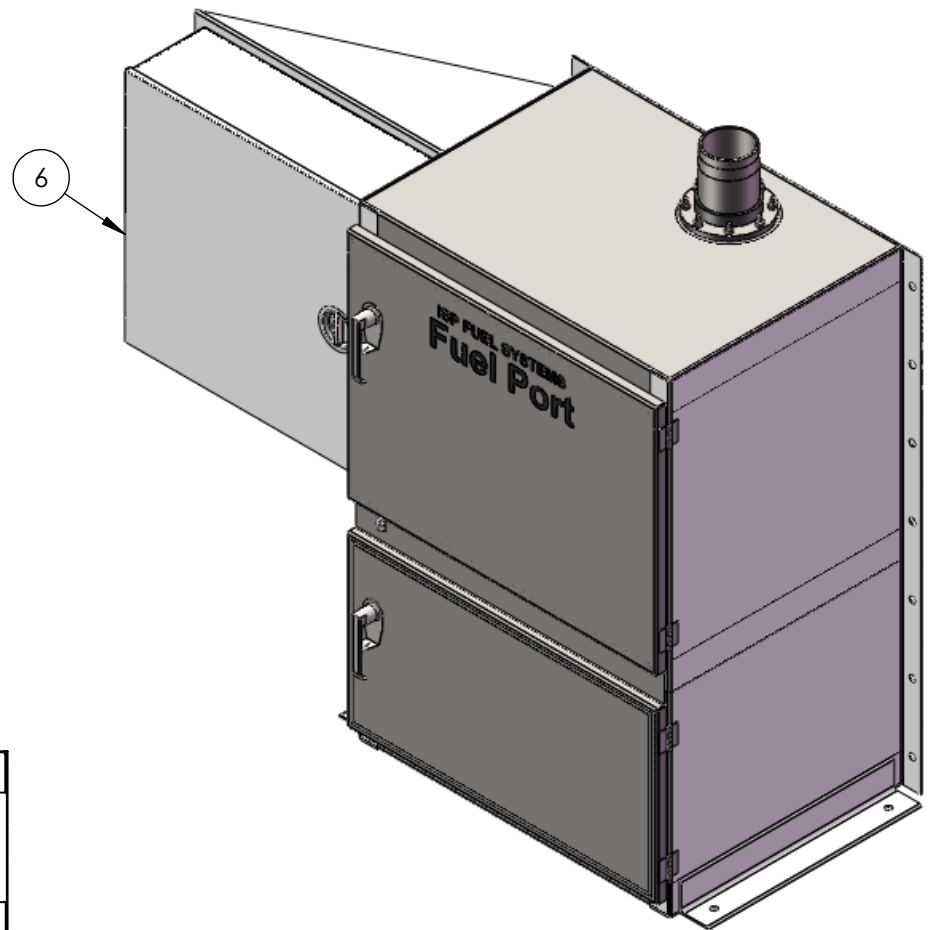
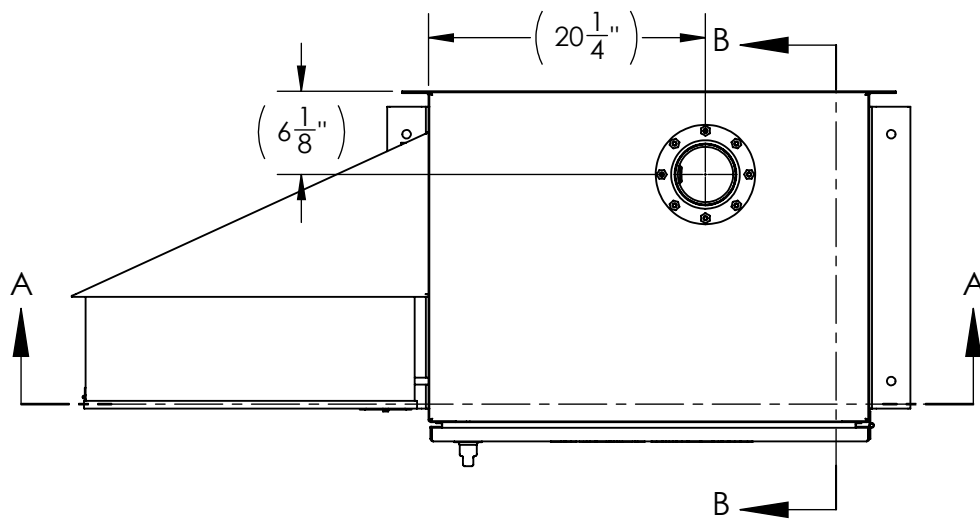


NOTE:
 1. DIMENSIONS MAY VARY 1/8" DUE TO STANDARD PRACTICES.
 2. ALL PIPING IS SCH 40 PIPE WITH 150 BMI FITTINGS.



ITEM	QTY	DESCRIPTION
1	1	LEVER ACTION PUMP - LINCOLN MODEL 1340, 1-1/2" AND 2" INLET CONNECTION
2	1	BALL VALVE - APOLLO 64-10A-01, 4" NPT, BR
3	2	BALL VALVE - APOLLO 70-103-01, 1/2"NPT, BR, 600LB PSIG
4	1	ELBOW COUPLING W/ CHECK VALVE- PT COUPLING 1000740, 4" FNPT, BR
5	1	CHECK VALVE - NIBCO T-413Y, 1/2"NPT, CLASS 125, SWING TYPE, (TFE SEAT), BR
6	1	CONTROL PANEL

SECTION A-A

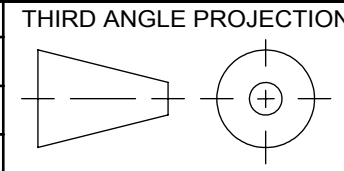
SECTION B-B

ISP Fuel Systems
 1035 Old Georges Road, North Brunswick, New Jersey 08902
 PH: 866-383-3481 FAX: 866-383-3482 www.ispfuelsystems.com

TITLE **4" FUEL PORT**

SHEET 1 OF 1

Customer: _____
 Purchase Order: _____
 Status: Approved
 Service: #2 FUEL OIL



Drawn C. FULLER		Date 9/14/2010	
Certified		Date	
SHOP TICKET	DRAWING NO. 10T0888B	SCALE: NTS	REV 0