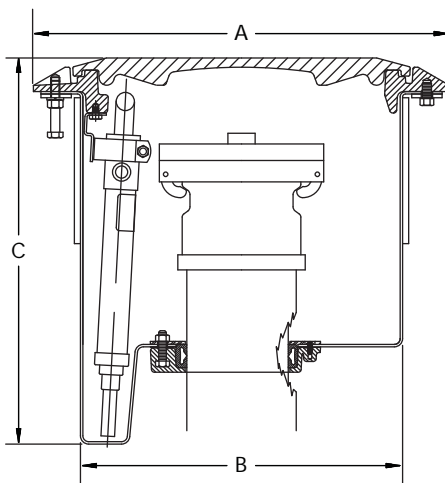
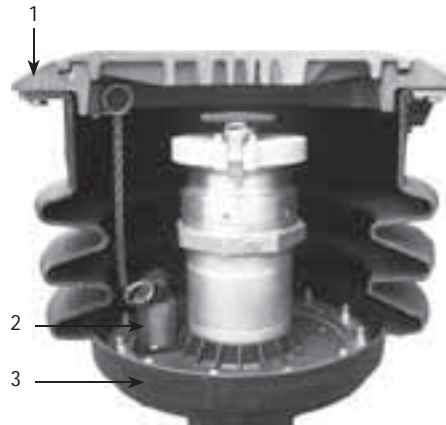


702, 705 and 715 Grade Level Spill Containers

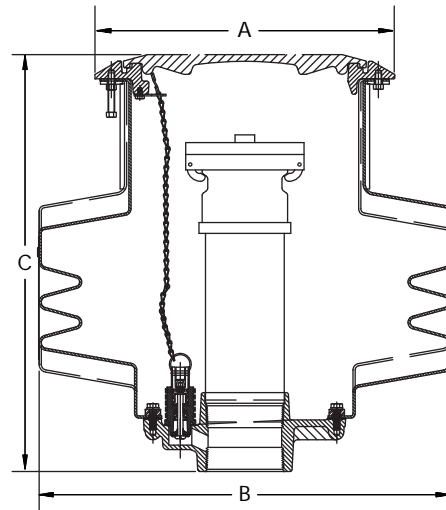
EBW spill containers are designed to collect spilled product that occurs during normal tank filling on underground storage tanks. Threaded base models are available in cast iron or composite. Slip-on (retrofit) models use a gasket flanged bolt system to secure the spill bucket to the riser pipe and are designed to eliminate the need to remove the riser pipe from the underground tank when installing.

Design Features

Number	Description
1	Heavy duty cast iron deflector ring
2	Drain valve
3	Cast iron or composite base



702, 703
SLIP-ON BASE



705, 715, 725
THREADED BASE

Model	A		B		C	
	In.	cm	In.	cm	In.	cm
702	17.12	43.48	13.25	33.70	15.88	40.30
703	17.12	43.48	13.25	33.70	15.88	40.30
705	17.12	43.48	14.75	37.46	15.69	39.85
715	17.12	43.48	23.50	59.69	22.50	57.15

Advantages

Solid Construction - The durable and flexible polyethylene shell is designed to move with natural ground movements. The shell is equipped with a gravel guard to prevent backfill material from filling in around the movable shell, eliminating problems with ground movement.

Cast Iron or Composite Base - Ensures a long lasting, watertight seal.

Heavy Duty Cast Iron Deflector - Provides protection from heavy traffic and truck plows and allows for water to run away from the spill container top, eliminating water collection in the bucket.

Drain Valve - Allows emptying of contained product back to the storage tank. The drain is equipped with a screen for convenient cleaning.

Cover Options - Includes FRC raintight in API colors, FRC black snap-on, raintight aluminum, watertight locking aluminum and cast iron.

Optional API Cover Identification Plates - Clearly identifies the product contained in the storage tank and helps to prevent cross contamination. Identification plates are available for all standard API symbols.

Highway 20 Rated (D.O.T. H20) - All EBW spill containers and manways exceed the D.O.T. H20 requirements.

- EVR Phase 1 Certification VR-103 (7XX-49Y-0Z models).

Materials

- Base: cast iron or composite.
- Bucket: polyethylene.
- Mounting ring: cast iron.
- Cover: fiber reinforced composite (FRC), cast iron or aluminum.



Composite Base Spill Containers

Model, with drain	Capacity		Cover	Weight	
	Gallon	Liter		Lbs.	Kg
705-471-01-BLK	5	19	Black, FRC, raintight	42.00	19.30
705-473-01-BLK-S*	5	19	Black, snap-on	42.00	19.30
715-471-01-BLK	15	57	Black, FRC, raintight	50.00	23.00



705

Cast Iron Base Spill Containers

Model, with drain	Capacity		Cover	Weight	
	Gallon	Liter		Lbs.	Kg
705-470-01-BLK	5	19	Black, FRC, raintight	54.00	25.00
705-472-01-BLK-S*	5	19	Black, snap-on	54.00	25.00
705-479-65-CI-GKT*	5	19	Grey epoxy coated cast iron w/gasket, RCA	56.00	25.40
705-479-01-CI-GKT*	5	19	Grey epoxy coated cast iron w/ gasket	56.00	25.40
705-490-01-BLK**	5	19	Black, FRC, raintight	58.00	26.70
715-470-01-BLK	15	57	Black, FRC, raintight	62.00	28.00
715-472-01 BLK	15	57	Black, FRC, raintight	62.00	28.00



715

Model, without drain	Capacity		Cover	Weight	
	Gallon	Liter		Lbs.	Kg
705-458-01-BLK	5	19	Black, FRC, raintight	64.00	29.40
705-472-02-BLK-S*	5	19	Black, snap-on	62.00	28.00
705-479-02-CI-GKT*	5	19	Grey epoxy coated cast iron w/gasket, RCA	68.00	30.80
705-490-02-BLK**	5	19	Black, FRC, raintight	42.00	19.30
715-472-02-BLK-S*	15	57	Black, snap-on	62.00	28.00

Retrofit Spill Containers

Model, with pump	Capacity		Cover	Weight	
	Gallon	Liter		Lbs.	Kg
702-400-01-BLK	5	19	Black, FRC, raintight	34.00	15.60
702-404-65-CI-GKT*	5	19	Grey epoxy coated cast iron, w/gasket, RCA	33.00	15.10
702-405-01-BLK-S*	5	19	Black, FRC, snap-on	33.00	15.10

Model, without pump	Capacity		Cover	Weight	
	Gallon	Liter		Lbs.	Kg
702-404-02-CI-GKT*	5	19	Grey epoxy coated cast iron, w/gasket	37.00	16.80
702-406-01-BLK	5	19	Black, FRC, raintight	37.00	16.80



702

*ULC approved, MH21091

**CARB Phase 1 EVR approved, VR-103

RCA references include riser, cap and adapter