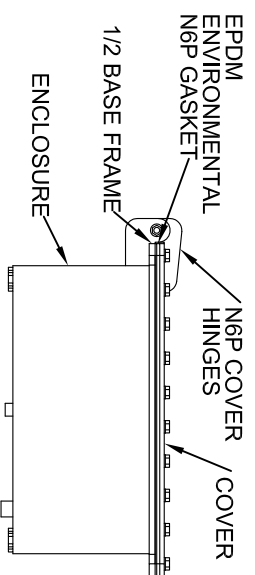
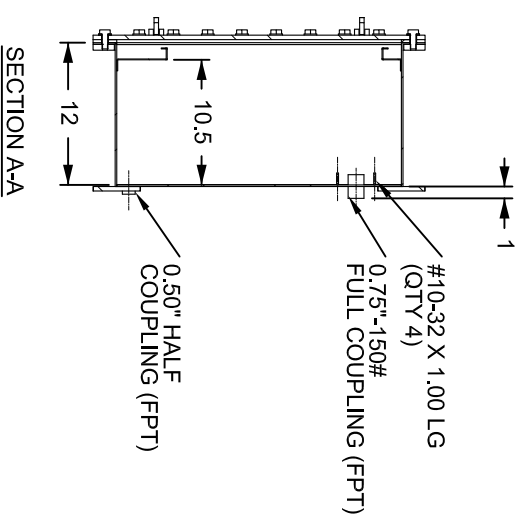
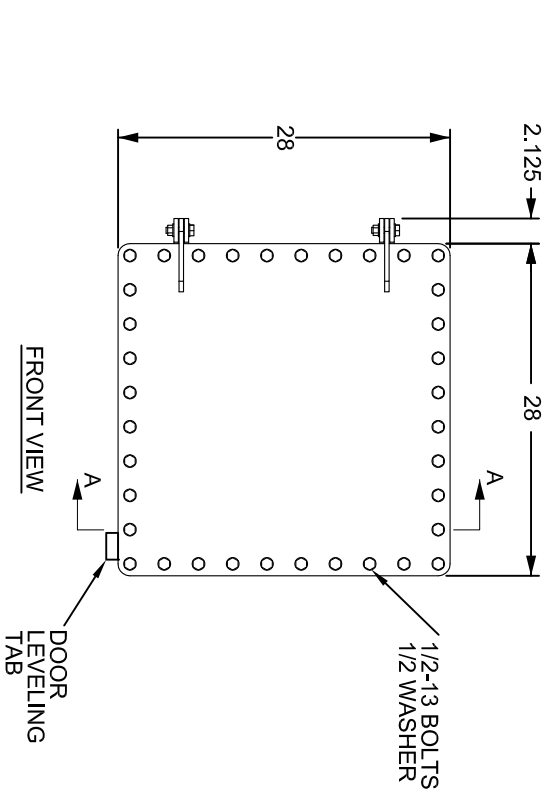
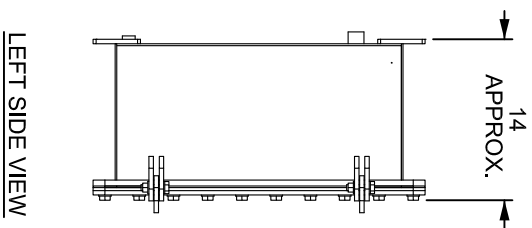
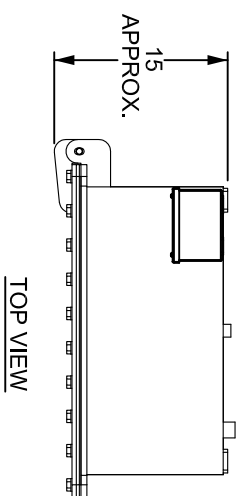


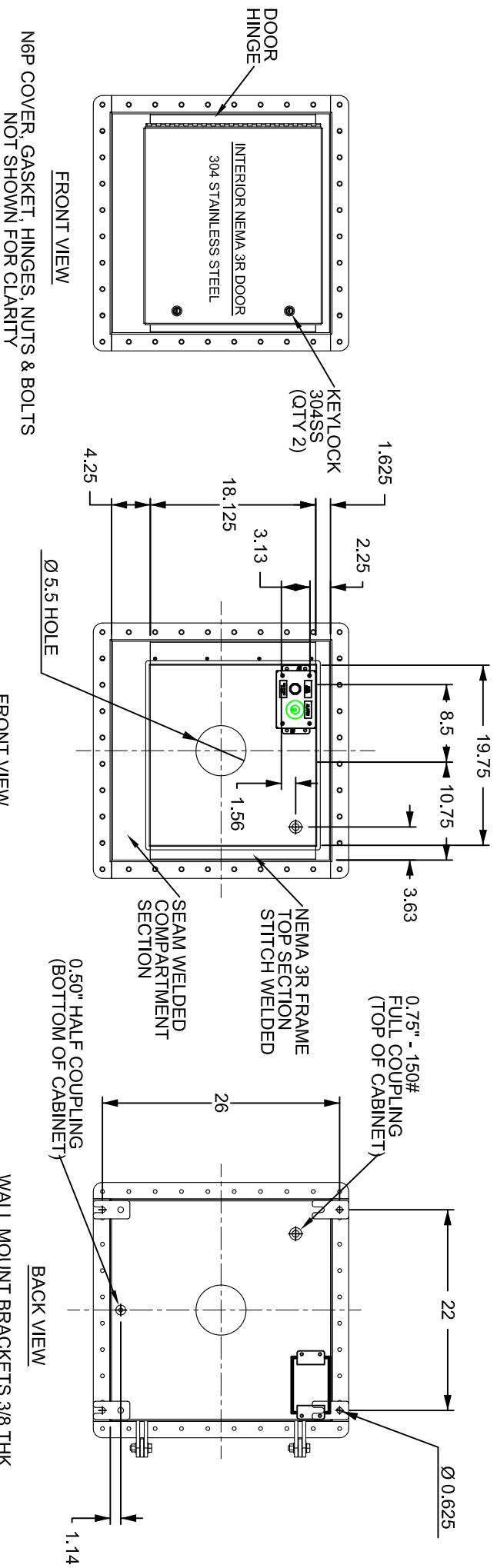
Surface Mount



PERFORMANCE TEST
6 PSIG (OR EQUIV. VACUUM) FOR 24 HRS
AIR PSIG (OR EQUIV. VACUUM) & TEMPERATURE
DATA LOGGED BEFORE AND AFTER TESTING

UNLESS OTHERWISE SPECIFIED		MATERIAL	
ALL DIM IN INCHES		10 GA STAINLESS STEEL EXCEPT AS NOTED	
FRACTIONAL ± 1/16			
X = ± .125			
XX = ± .060			
.XXX = ± .005			
ANGULAR TOL ± 1/2		FINISH	
DO NOT SCALE		NO COATING	
		2B FINISH	
EST. WEIGHT: 225 lbs.		SCALE: NTS	
		DATE: 9/4/2014	
ISP Fuel Systems		NEMA 6P ENCLOSURE	
		INTERIOR NEMA 3R DOOR	
		24 x 24 x 12, 3 FT	
SIZE PART NUMBER		REV	
A N6P242412-304SS-D3R		X7	

Surface Mount



UNLESS OTHERWISE SPECIFIED ALL DIM IN INCHES		ISP Fuel Systems	
FRACTIONAL ± 1/16 X = ± .125 XX = ± .060 .XXX = ± .005		NEMA 6P ENCLOSURE INTERIOR NEMA 3R DOOR 24 x 24 x 12, 3 FT	
ANGULAR TOL ± 1/2 DO NOT SCALE		NO COATING 2B FINISH	
EST. WEIGHT: 225 lbs.		SCALE: NTS	DATE: 9/4/2014